

North Street, Horsham, RH12 1FJ
Offers Over £240,000
Council Tax Band: B



LOCATION

This spacious, stylish, first-floor, one-bedroom apartment in Horsham is offered with no onward chain. It offers a perfect balance between convenience and lifestyle.

Commuter Links: Less than a five-minute walk to mainline station, with trains to London and coast

Town Centre: Less than a five-minute walk to a wealth of restaurants, cafes, and shops.

Green Space: Directly opposite Horsham Park, perfect for exercise and relaxation.

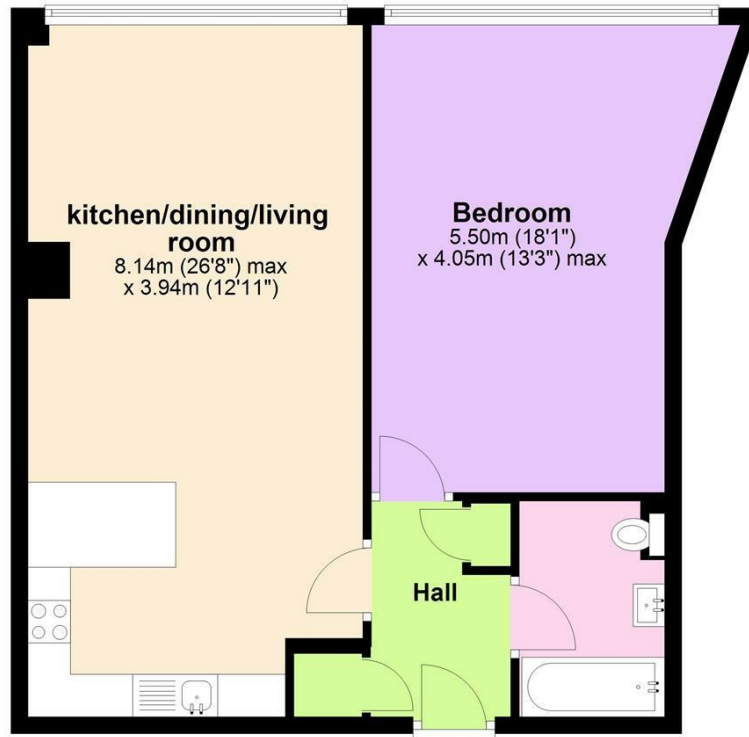
Leisure: The park includes a leisure centre with pool and gym facilities.



Open House Horsham

Floor Plan

Approx. 62.1 sq. metres (668.5 sq. feet)



Total area: approx. 62.1 sq. metres (668.5 sq. feet)

Holmes Park



Energy Efficiency Rating		Current	Potential
Very energy efficient - lower running costs			
(92 plus)	A		
(81-91)	B		
(69-80)	C		
(55-68)	D	61	61
(39-54)	E		
(21-38)	F		
(1-20)	G		
Not energy efficient - higher running costs			
England & Wales		EU Directive 2002/91/EC	